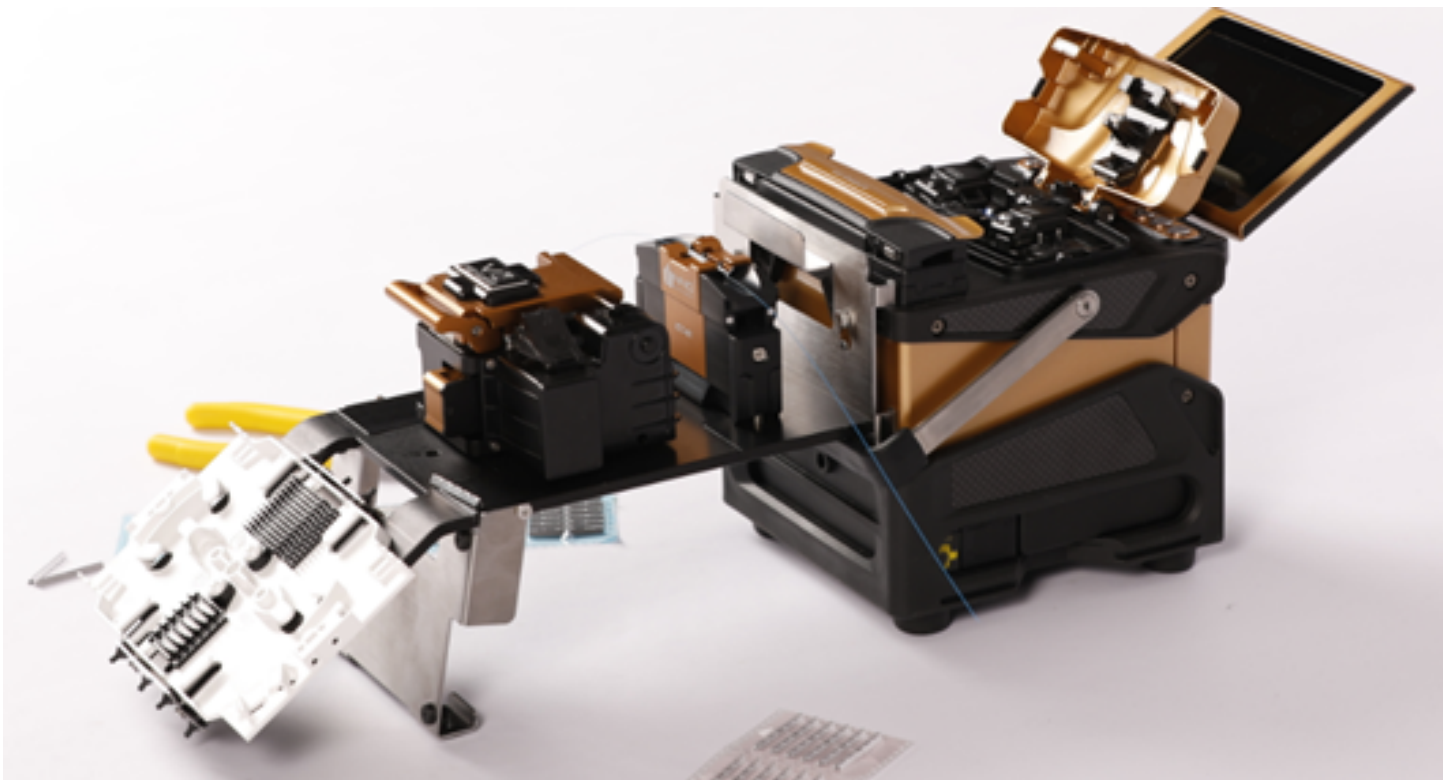


# IWB Package

Total solution to protect spliced fiber  
with High Formability Splice Work Bench and durable crimp tool



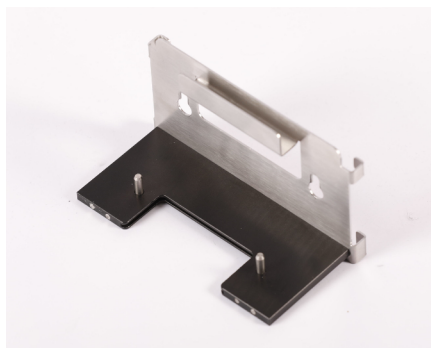
You dream,  
we **DESIGN**

The INNO Workbench (IWB) is designed for INNO VIEW series Fusion Splicer. Workbench can be docked to the splicer and fix the position of cleaver and Crimp-Tool. INNO IWB can be modularized total 3 parts and can be assembled depend on user's preference and environment. IWB can be assembled in two directions to support two directional Fusion Splicer work.

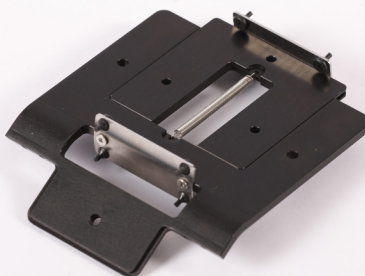
# IWB

**INNO WORKBENCH**  
for Crimp-tool, Cleaver, Fiber Cabinet

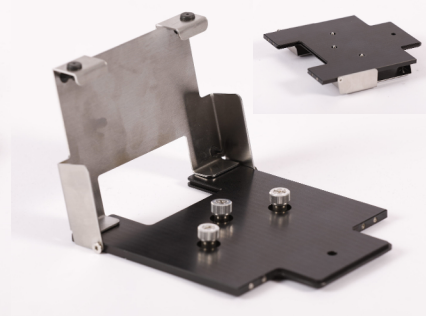
## MODULATIONS



Docking Module  
For Crimp Tool



Carrier Module  
For Fiber Cassette



Expansion Module (Foldable)  
For Cleaver

## ASSEMBLING ON SPLICER



## ORDERING CODE

### FULL SET

VIEW8+, VIEW7	IWB-01
VIEW6S, VIEW5, VIEW3	IWB-02

### DOCKING MODULE

IWB-01 Compatible	IWB-D-01
IWB-02 Compatible	IWB-D-02

### CARRIER MODULE

IWB-01, IWB-02 Compatible	IWB-C
---------------------------	-------

### EXPANSION MODULE

IWB-01, IWB-02 Compatible	IWB-E
---------------------------	-------

## DIMENSIONS

### ASSEMBLING

W x D x H (mm)	285 x 125 x 170
----------------	-----------------

\* Exclude Splicer dimensions, Height can be differed depend on Splicer model

### PACKAGE

W x D x H (mm)	175 x 125 x 90
----------------	----------------

WEIGHT	605 gram
--------	----------

\* Height can be differed depend on Splicer model

# ICT-01

## Easy Clamping of Splice Protection

*The INNO Crimp Tool ICT-01 is designed to use the splice protector with less force of pressure to secure the splicing point. By using durable materials to build ICT-01, INNO Crimp tool works in harsh environment with shock-resistance.*



### ORDERING CODE

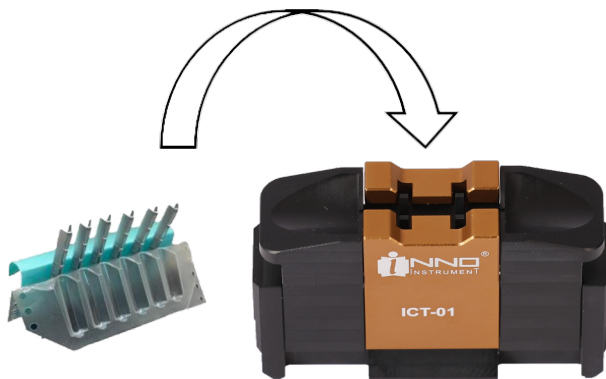
INNO Crimp Tool	ICT-01
-----------------	--------

### DIMENSIONS

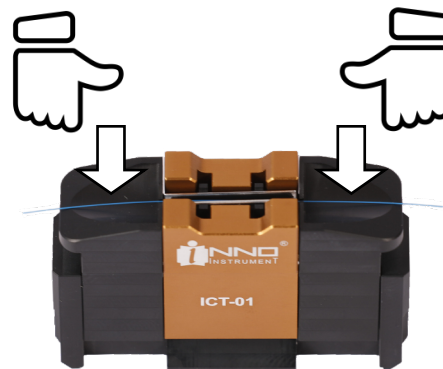
W x D x H (mm)	82 x 22.5 x 54
WEIGHT	92 gram



### CLAMP WITH ICT-01



1. Place Splice protector in the center of ICT-01



2. Place the spliced fiber in the center of the protector and press the edges of ICT-01

The splice protection element is used for protecting fibre optic fusion splice connections with the highest quality.

·Stable construction for mechanical protection of fusion splice

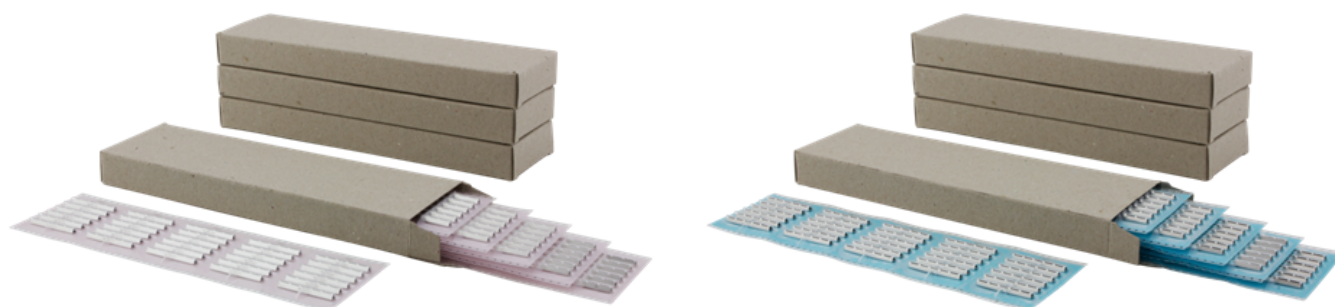
·Use in glass fibers with 250µm outside diameter (including primary coating)

·Permanently elastic compound prevents damage to the splice site from environmental influences

·Telekom approval according to TS 0338/96 for ICT-T03

# Splice Protector

Strong Protection Without Heating



## ASSESSMENT OF THE PACKAGING

Transport simulation  
Degradation tests  
Temperature change

25°C up to +75°C; 20 cycles over 8 days

## ASSESSMENT ON SPLICER CONNECTION

Dry heat according to

DIN EN 61300-2-18; 4 days at + 85°C

Cold according to

DIN EN 61300-2-17; 4 days at -40°C

Humidity heat according to

DIN EN 61300-2-19; 4 days at 40°C and a relative humidity of 93%

Temperature change according to

DIN EN 61300-2-22; 12 cycles over 3 days from -40°C to + 70°C

Vibration test according to

EN 60068-2-27; 3 hours at frequencies of 10-500 Hz

Shock test according to

EN 60068-2-27 with 15 g

## MECHANICAL TEST

Bending test

Upright in longitudinal axis and flat in longitudinal axis

Testing of protective compound

Pressing force and flow rate

## DIMENSIONS

Item

30 x 3 x 1.2 mm (W x H x D)

Packing unit

205 x 20 x 60 mm (W x H x D)

Package weight

Approximately 70g

Package quantity

Splice Protector 150pcs (5 blister stripes with 30pcs) in one package

## ORDERING CODE

Splice Protector (Telekom Certified) ICT-T03

Splice Protector

ICT-T04

[www.innoinstrument.com](http://www.innoinstrument.com)  
[www.innoinstrument.eu](http://www.innoinstrument.eu)



You dream,  
we DESIGN

Copyright © 2020 INNO Instrument Europe GmbH. All rights reserved  
Gothaer Str. 18, 40880 Ratingen, Germany  
tel +49-2102-9424-80 fax +49-2102-9424-80

Printed in Germany